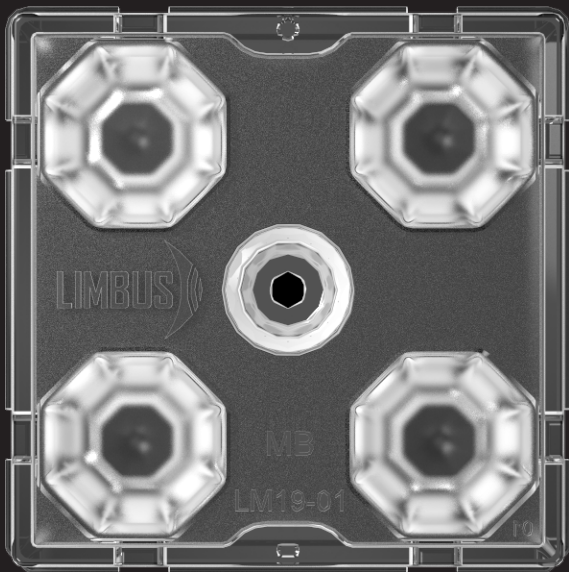


LIMBUS

CONTROL YOUR LIGHT

BY  TD Lighting Solutions



TLS04NI-5050-60-MB

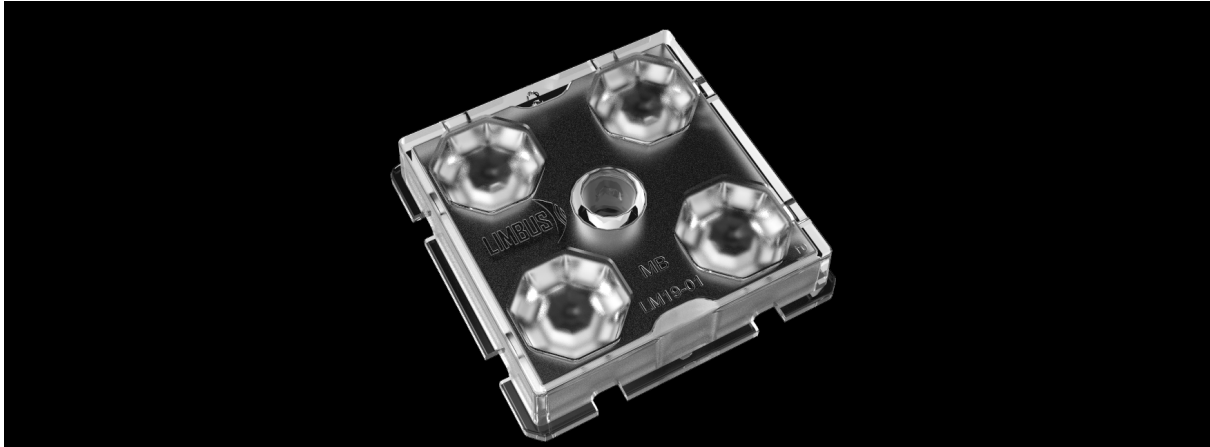
- NICHIA NVSW219D
- LUMILEDS LUXEON 5050
- ETI 3535 AV1

TLS04NI-5050-60-MB
with NICHIA NVSW219D
 LED OPTIC DATASHEET

www.limbus.com.tr
 444 27 33

LIMBUS
 CONTROL YOUR LIGHT

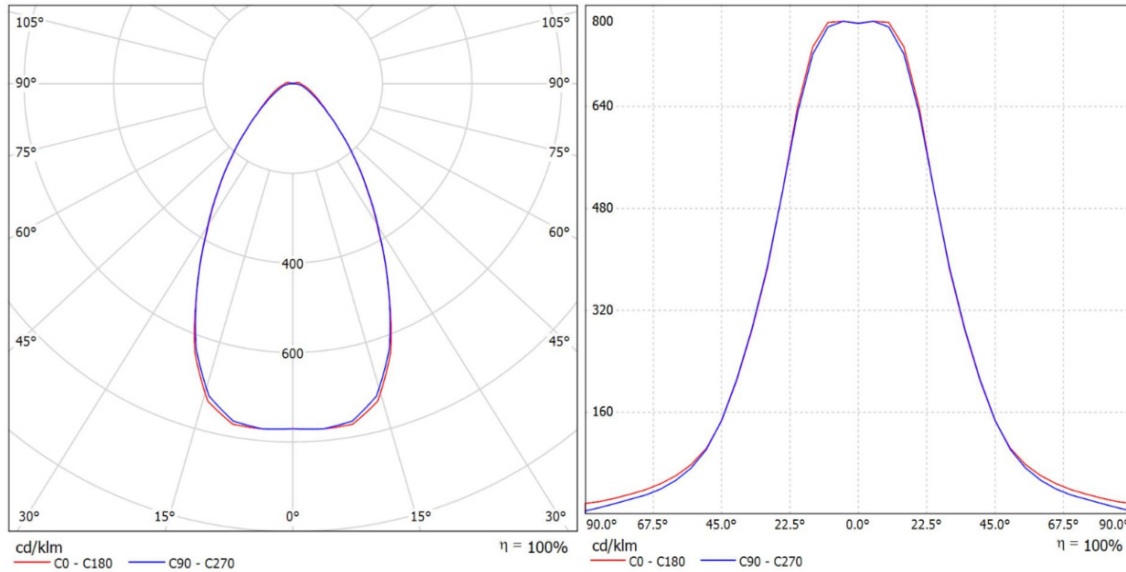
PRODUCT PICTURE



GENERAL SPECIFICATIONS

Product Code	TLS04NI-5050-60-MB
Description	Area Lighting
Degree (FWHM)	61°
Efficiency	93%
Type	4in1
Size (mm) W x L x H	50x50x10.5
Material / Operating Temp.	PMMA / -40 °C ~ + 90 °C max
Fastening	Screw, Pin
Box Size (mm) WxLxH	305x405x315
Box Quantity	720 pcs
Box Weight (g)	11.750 g
Rohs Complaint	Yes
Storage Temperature	0 °C ~ 40 °C max
Compatible LED MODULE	X-MS51221NCxx-NVSW219D-16

PHOTOMETRIC SPECIFICATIONS



APPLICATION NOTES

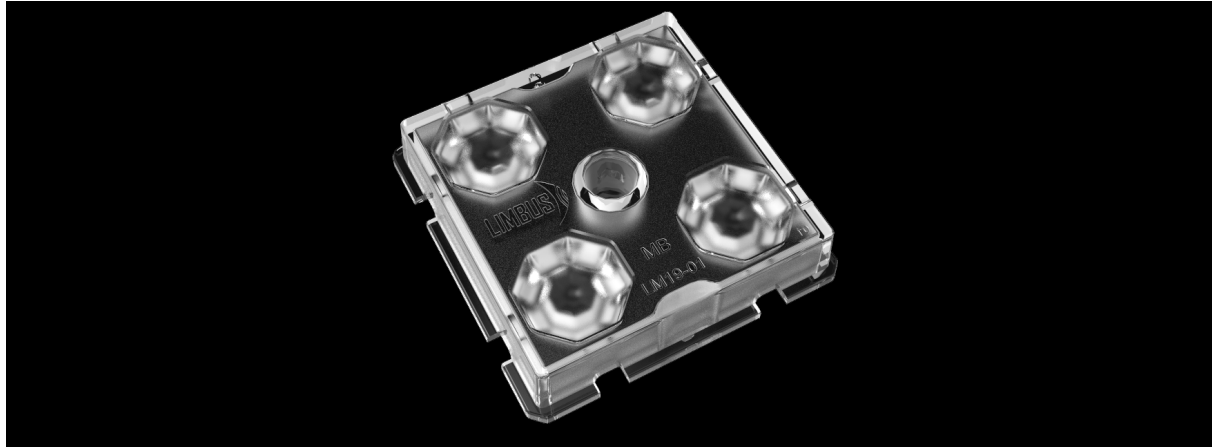
- Please use a litter water and soft fabric (air-laid paper) to clean the lens & reflector if necessary.
- Forbid to use industrial solvent to clean the lens, such as alcohol.
- Storage environment temperature is 0°C~40°C,humidity is 30%~95%.
- Optic Lens has the function to change the ray of light, it is made of optical material, the effect shall be influenced once pollute. Please do not open the packing before use it,to avoid the dust pollution.
- Protect the product from the sun and other ultraviolet ray, as these will lead to aging, change color, crack, etc.
- Please ware gloves once install the lens, avoid to abrasion the lens surface.
- Forbid to use acidic or alkaline solution touch the product, avoid to generate the chemical reactions.

TLS04NI-5050-60-MB
with LUMILEDS LUXEON 5050
 LED OPTIC DATASHEET

www.limbus.com.tr
 444 27 33

LIMBUS
 CONTROL YOUR LIGHT

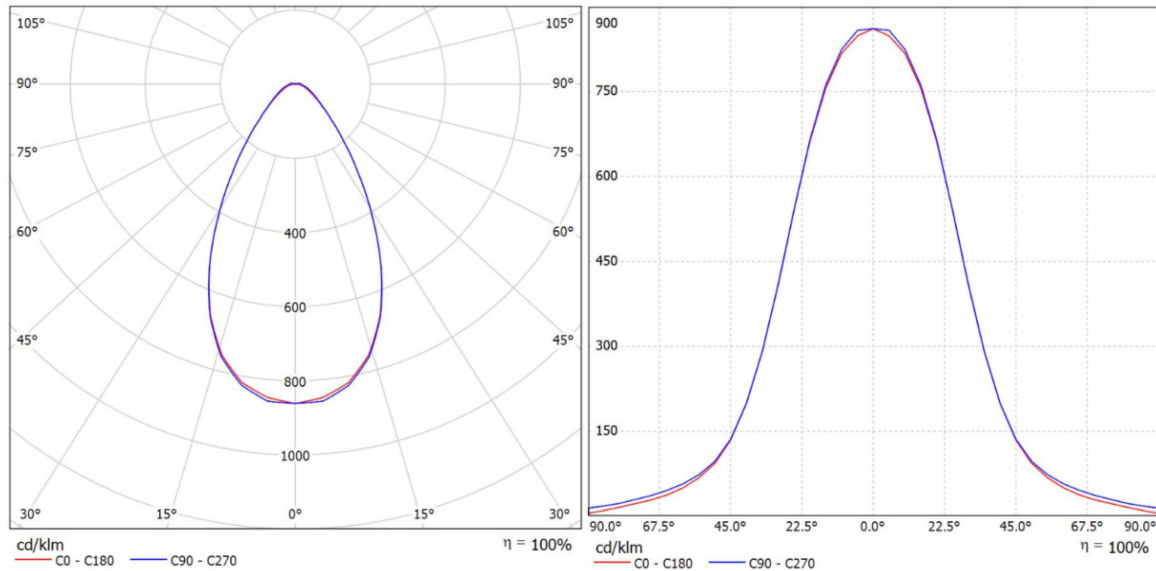
PRODUCT PICTURE



GENERAL SPECIFICATIONS

Product Code	TLS04NI-5050-60-MB
Description	Area Lighting
Degree (FWHM)	59°
Efficiency	93%
Type	4in1
Size (mm) W x L x H	50x50x10.5
Material / Operating Temp.	PMMA / -40 °C ~ + 90 °C max
Fastening	Screw, Pin
Box Size (mm) WxLxH	305x405x315
Box Quantity	720 pcs
Box Weight (g)	11.750 g
Rohs Complaint	Yes
Storage Temperature	0 °C ~ 40 °C max
Compatible LED MODULE	X-ML51222LM-5050-16

PHOTOMETRIC SPECIFICATIONS



APPLICATION NOTES

- Please use a litter water and soft fabric (air-laid paper) to clean the lens & reflector if necessary.
- Forbid to use industrial solvent to clean the lens, such as alcohol.
- Storage environment temperature is 0°C~40°C, humidity is 30%~95%.
- Optic Lens has the function to change the ray of light, it is made of optical material, the effect shall be influenced once pollute. Please do not open the packing before use it, to avoid the dust pollution.
- Protect the product from the sun and other ultraviolet ray, as these will lead to aging, change color, crack, etc.
- Please ware gloves once install the lens, avoid to abrasion the lens surface.
- Forbid to use acidic or alkaline solution touch the product, avoid to generate the chemical reactions.

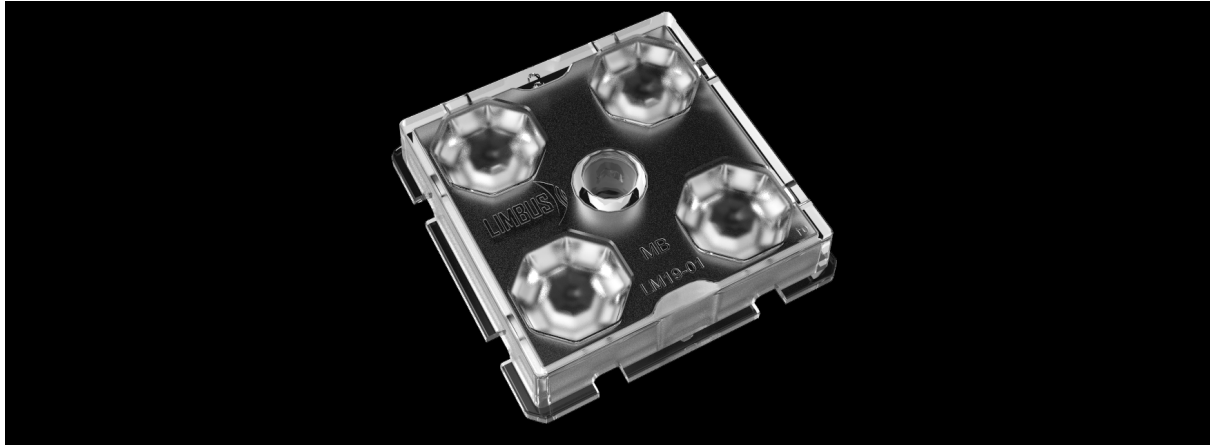
TLS04NI-5050-60-MB with ETI 3535 AV1

LED OPTIC DATASHEET

www.limbus.com.tr
444 27 33

LIMBUS
CONTROL YOUR LIGHT

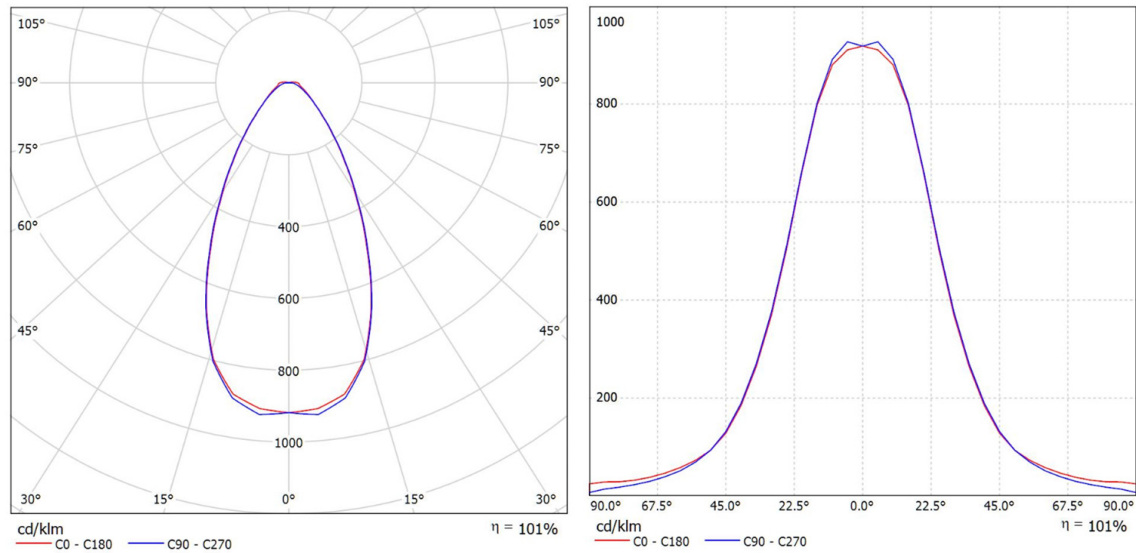
PRODUCT PICTURE



GENERAL SPECIFICATIONS

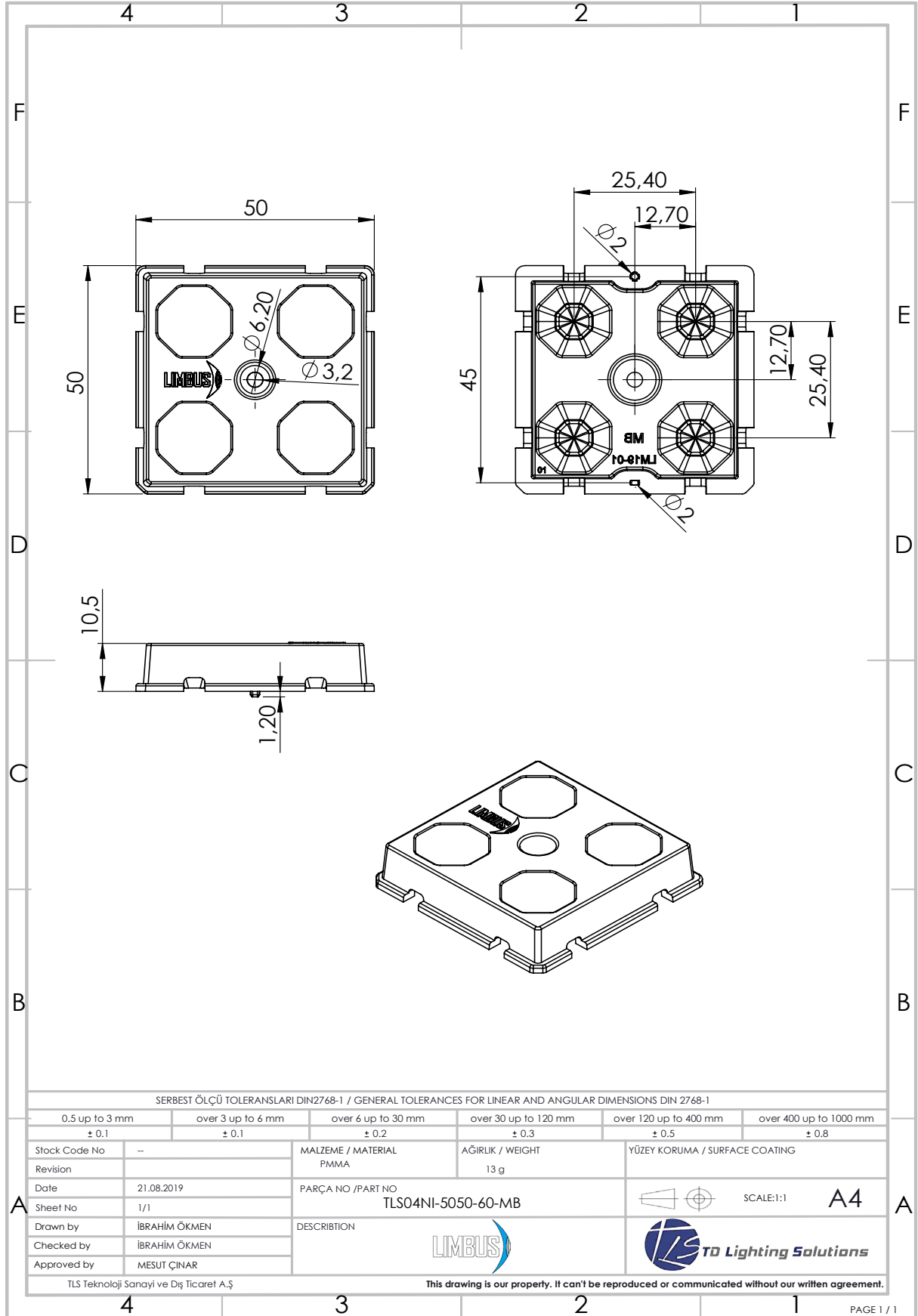
Product Code	TLS04NI-5050-60-MB
Description	Area Lighting
Degree (FWHM)	53°
Efficiency	93%
Type	4in1
Size (mm) W x L x H	50x50x10.5
Material / Operating Temp.	PMMA / -40 °C ~ + 90 °C max
Fastening	Screw, Pin
Box Size (mm) WxLxH	305x405x315
Box Quantity	720 pcs
Box Weight (g)	11.750 g
Rohs Complaint	Yes
Storage Temperature	0 °C ~ 40 °C max
Compatible LED MODULE	X-MS51221NCxx-ETI-3535-16

PHOTOMETRIC SPECIFICATIONS

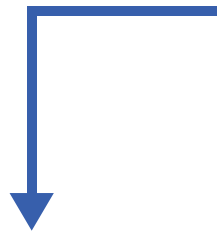
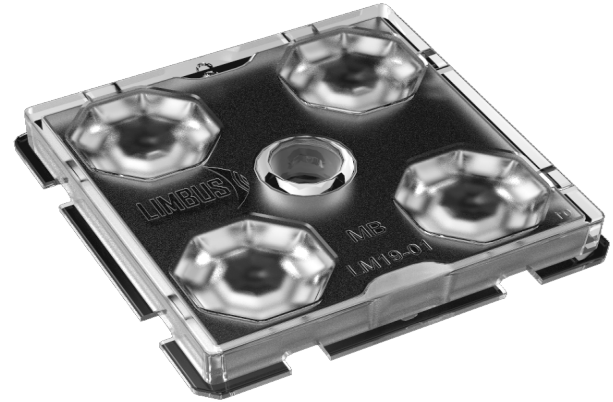


APPLICATION NOTES

- Please use a litter water and soft fabric (air-laid paper) to clean the lens & reflector if necessary.
- Forbid to use industrial solvent to clean the lens, such as alcohol.
- Storage environment temperature is 0°C~40°C, humidity is 30%~95%.
- Optic Lens has the function to change the ray of light, it is made of optical material, the effect shall be influenced once pollute. Please do not open the packing before use it, to avoid the dust pollution.
- Protect the product from the sun and other ultraviolet ray, as these will lead to aging, change color, crack, etc.
- Please ware gloves once install the lens, avoid to abrasion the lens surface.
- Forbid to use acidic or alkaline solution touch the product, avoid to generate the chemical reactions.



Item	Quantity	Total Parts	Size (L*W*H*)	G.W
Tray	30 pcs per Tray	30 pcs	50*50*10.5 mm	0.39 Kg
Outer Box	30 Trays per Outer Box	720 pcs	405*305*315 mm	11.75 Kg



- 24 Trays / 30 Optics each



- 24 Trays / Outer Box

PACKAGING

LEGAL NOTICE

Product information provided by TLS Teknoloji Sistemleri San ve Dış Tic AŞ ("TLS") in this document is believed to be correct and accurate. TLS reserves the right to change/correct the specifications and other data or information relating to products without notice but TLS accepts no liability for errors that may appear in this document, howsoever occurring, or liability arising from the use or application of any information or data provided herein. Neither the supply of such information, nor the purchase or use of products conveys any licence or permission under patent, copyright, trademark or other intellectual property right of TLS or third parties.

Products sold by TLS are subject to its standard Terms and Conditions of Sale that are available on request. No warranty is given that products do not infringe the intellectual property rights of third parties, and furthermore, the use of products in certain ways or in combination with TLS, or non-TLS furnished equipments/components may infringe intellectual property rights of TLS.

The purpose of this document is to provide information only and it may not be used, applied or reproduced (in whole or in part) for any purpose nor be taken as a representation relating to the products in question. No warranty or guarantee express or implied is made concerning the capability, performance or suitability of any product, and information concerning possible applications or methods of use is provided for guidance only and not as a recommendation. The user is solely responsible for determining the performance and suitability of the product in any application and checking that any specification or data it seeks to rely on has not been superseded.

Products are intended for normal commercial applications. For applications requiring unusual environmental requirements, extended temperature range, or high reliability capability (e.g. military, or medical applications), special processing/testing/conditions of sale may be available on application to TLS.

CONTACT

TLS Teknoloji Sistemleri San ve Dış Tic AŞ
Akçaburgaz Mahallesi 3080. Sokak No:5 Esenyurt / İstanbul / TURKEY

info@tlsteknoloji.com
+90 444 27 33